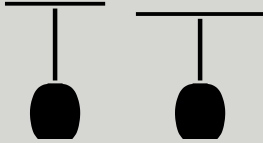


## Instructions



# Lato LN8 & LN9 by Luca Nichetto 2018

---

Congratulations with your new Lato table, designed in 2018 by Luca Nichetto. We hope you will enjoy using this product and follow these instructions to ensure correct installation. If you have any questions or comments, please do not hesitate to contact us by mail on:

[info@andtradition.com](mailto:info@andtradition.com)

# Lato LN8 & LN9 by Luca Nichetto 2018

Please read these instructions carefully and retain them for future reference to ensure that the product is used correctly. For your own safety, please study each step of this instruction manual first. Tradition is not responsible for any faults or damages caused by not following these instructions correctly. Do not modify this product in any way.

## Contents

- A Table-top with set screw
- B Column
- C Marble base
- D Washer
- E Lock-washer
- F Screw
- G Allen Key

## Safety precautions

- Dispose of any plastic bags and foam from packaging and do not allow children to play with it.
- The table is only intended for interior use.
- Handle table tops with care in order not to scratch surface.
- Spilled liquids of any kind should be removed immediately from the table top as it may penetrate the surface treatment and cause damage to it.

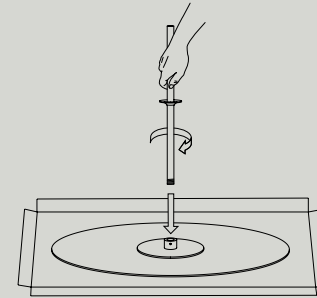
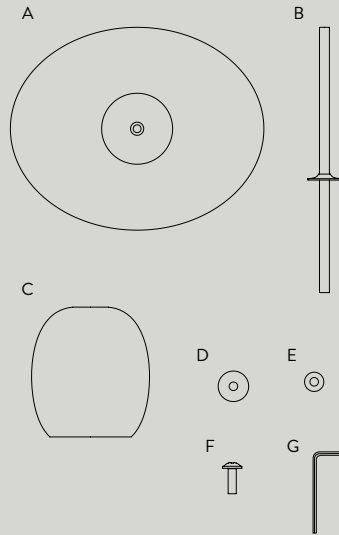
## Cleaning instructions

Avoid use of abrasive cleaning products such as steel wool or polish. Avoid placing wooden furniture in direct sunlight, excessive heat or humidity.

**Powder coated steel:** Clean with a soft cloth wrung in a solution of water and universal cleaning detergent and dry immediately with a soft cloth.

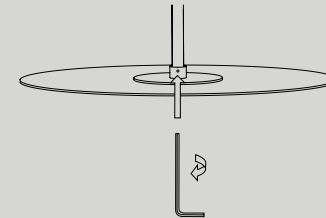
**Marble:** Wipe with a soft, damp cloth and dry immediately with a soft cloth. For more severe cleaning only use a cleaning detergent specifically for natural stone.

**Lacquered wood:** For daily care it is recommended to dust the surface with a soft cloth. Lacquered wood can be cleaned with a soft cloth wrung in a mild solution of lukewarm water and a universal cleaning detergent. Always follow the wood grains and dry it with a soft cloth after.



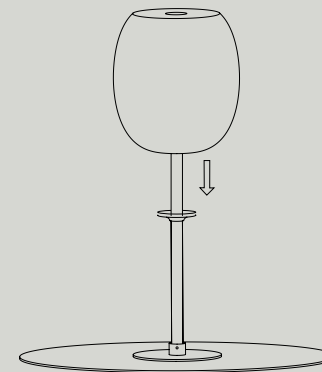
## Step 1

Place table top (A) on a soft, flat surface to avoid scratches. Screw the metal column (B) onto the table top by hand. Fix firmly together.



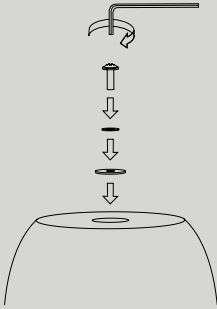
## Step 2

Once the metal column is firmly tightened, use the Allen Key (G) to tighten the set screw on the table top.



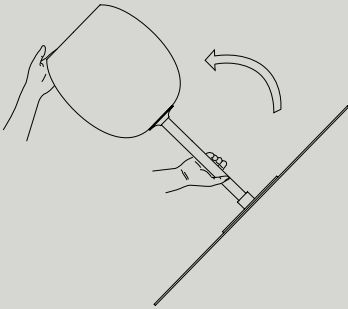
## Step 3

Slide down the marble base (C) carefully onto the metal column.



#### Step 4

Once the marble base is placed onto the metal column, make sure to place the washer (D) facing the felt against the marble and afterwards place the lock-washer (E) on top, before tightening the screw (F) with the Allen Key.



#### Step 5

Once the bottom screw is tightened, carefully flip around the assembled table by holding the column - NOT the table top - and at the same time by supporting the marble base.